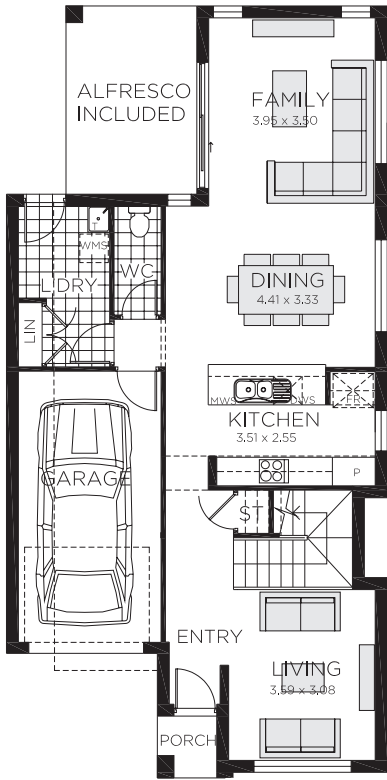


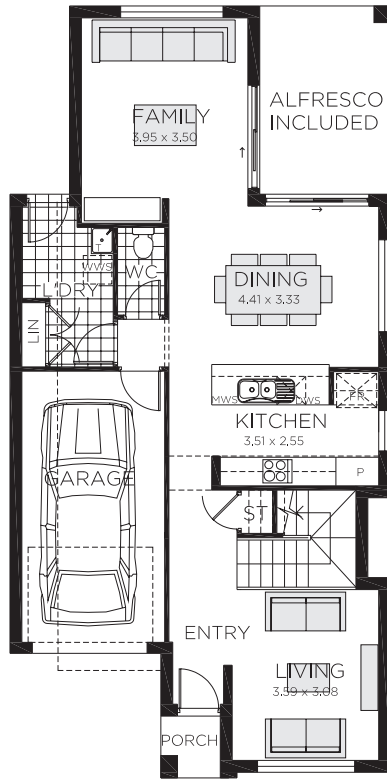
9 METRE WIDE BLOCK

ACTON 21

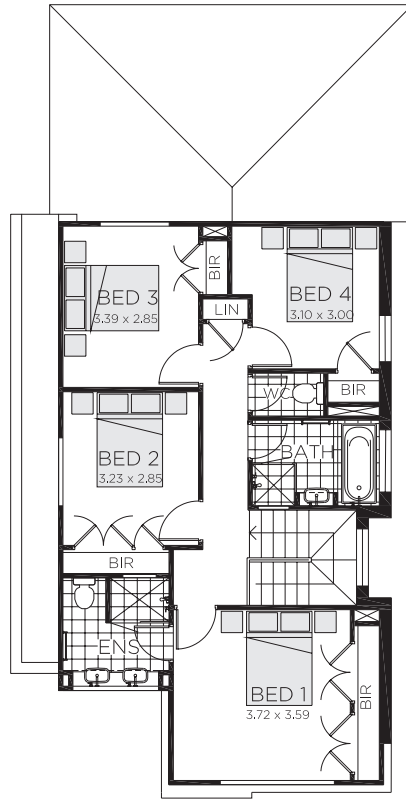
Packed with all the elements that are important for now and into the future. With four bedrooms and additional living spaces this home delivers on all your expectations without compromising to meet the needs of today's slimmer blocks.



OPTION 1



OPTION 2



🛏️ 4
🌧️ 2
🚗 1
📏 sq 20.8

Ground Floor Living	83.28m ²
First Floor Living	78.38m ²
Garage	19.25m ²
Porch	1.68m ²
Alfresco	11.07m ²
Total	193.66m²
Total	20.8 squares
Overall Width	8.000m
Overall Length	16.105m

Note, some aspects of this design are not compliant with Council's DCP. Council may require variations to the design at the time of development application and a credit or price increase may apply.