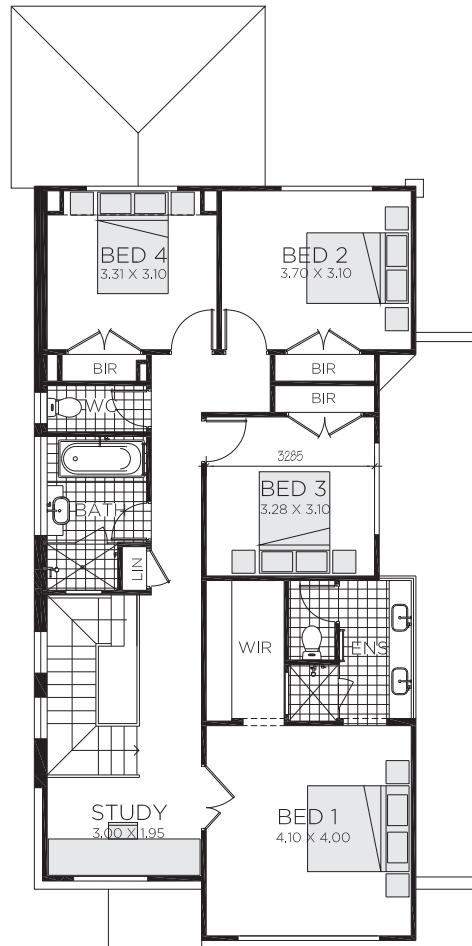
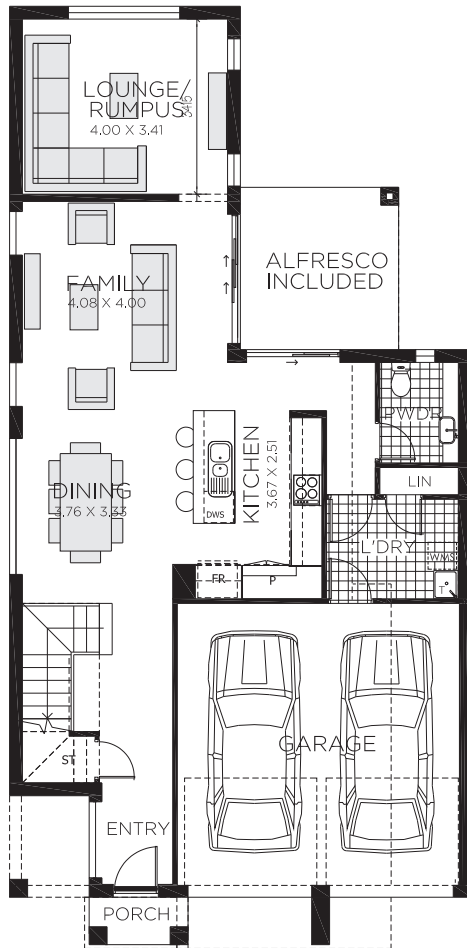


10/11 METRE WIDE BLOCK

# DERWENT 25

A home that will impress you with the value it offers particularly it's suitability for a 11 metre wide block without compromising on space. With a range of floor plan options this home can also be adapted to a five bedroom home to cater for extended families or multi-generational living.



 4
  2.5
  2
  25.6

Ground Floor Living	90.34m <sup>2</sup>
First Floor Living	103.09m <sup>2</sup>
Garage	32.83m <sup>2</sup>
Porch	1.78m <sup>2</sup>
Alfresco	9.77m <sup>2</sup>
Total	237.81m <sup>2</sup>
Total	25.6 squares
Overall Width	9.000m
Overall Length	18.300m