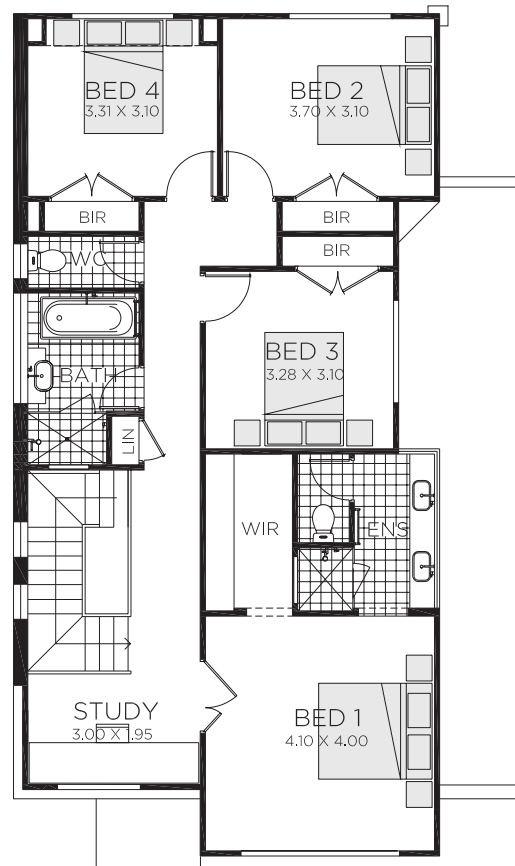
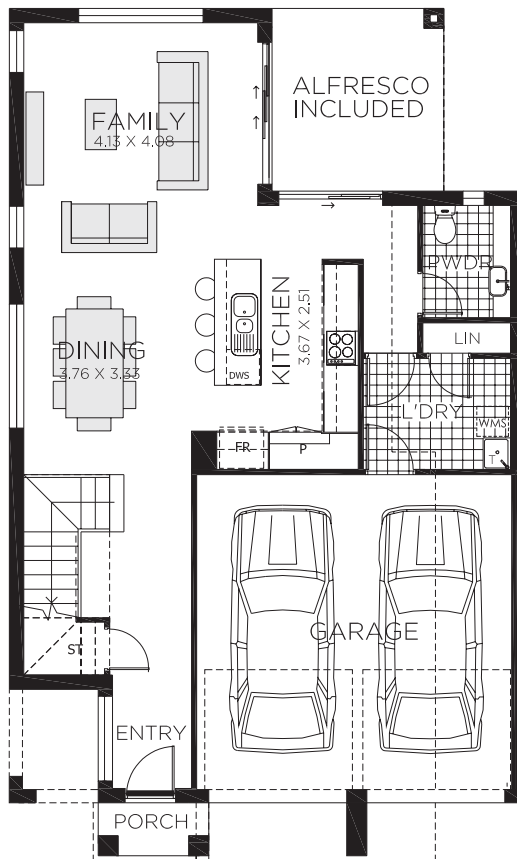


10/11 METRE WIDE BLOCK

DERWENT 24

A home that will impress you with the value it offers particularly it's suitability for a 11 metre wide block without compromising on space. With a range of floor plan options this home can also be adapted to a five bedroom home to cater for extended families or multi-generational living.



 4
  2.5
  2
  23.9

| | |
|---------------------|----------------------|
| Ground Floor Living | 74.84m ² |
| First Floor Living | 102.72m ² |
| Garage | 32.83m ² |
| Porch | 1.78m ² |
| Alfresco | 9.57m ² |
| Total | 221.74m ² |
| Total | 23.9 squares |
| Overall Width | 9.000m |
| Overall Length | 14.795m |

FITS 10/11m WIDE BLOCK